

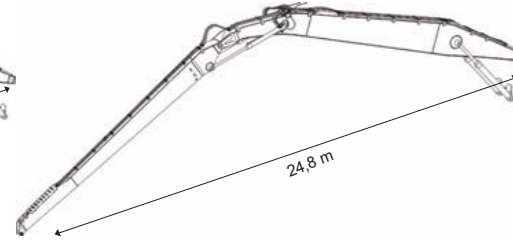
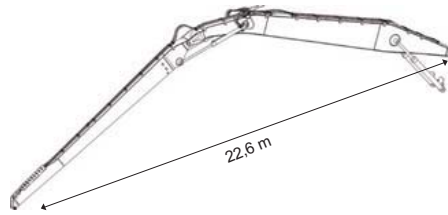
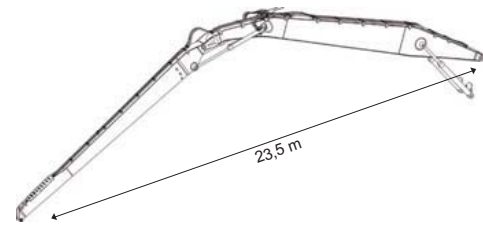
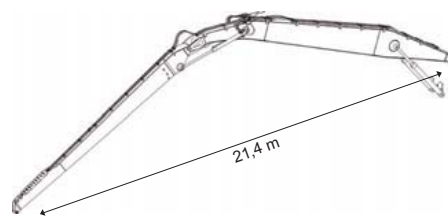
MultiDocker®

CH74D



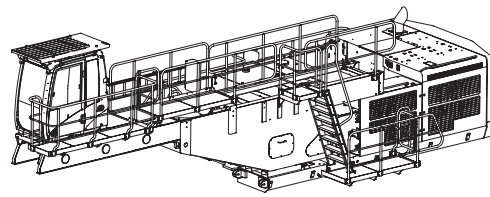
Stick & boom

The MultiDock CH74D can be delivered with a reach of up to 24.8 meters, excluding equipment, and is designed to handle bulk carriers up to 9000 dwt. Since the central pivot of the MultiDock can be placed close to the quayside, it is possible to make full use of the machine's reach. The raw power and precision of the MultiDock means high capacity and flexibility. The machine's lifting capacity is the best in its class. MultiDock offers four different configurations of the stick and boom.

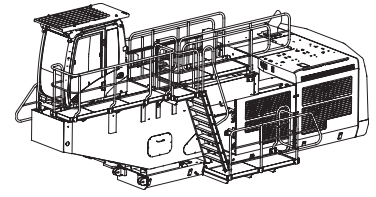


The Cabin

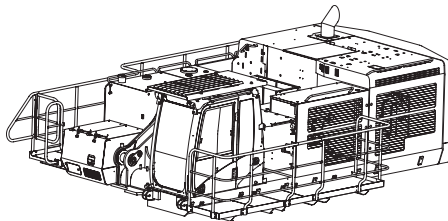
A proper cabin environment generates good comfort and increases efficiency. With its four standardized cabin alternatives, the MultiDock offers a unique approach to operating comfort. By consulting the customer, we choose the most optimal cabin for each customer's application. All MultiDock's cabin solutions reflect powerful and exceptional design, which creates a stable and unaffected environment in full production and heavy lifts. Our most popular model, CM8000, gives the operator the possibility to quickly adjust the position of the cabin to optimize the visibility in all situations without cutting back on the comfort. The CM8000 is designed of a unique birder system without joints, which minimize vibrations and strokes efficiently.



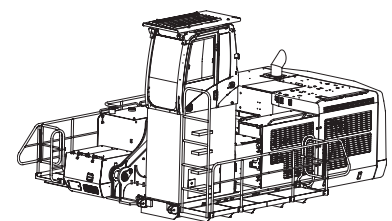
CM8000



CF4200



CS



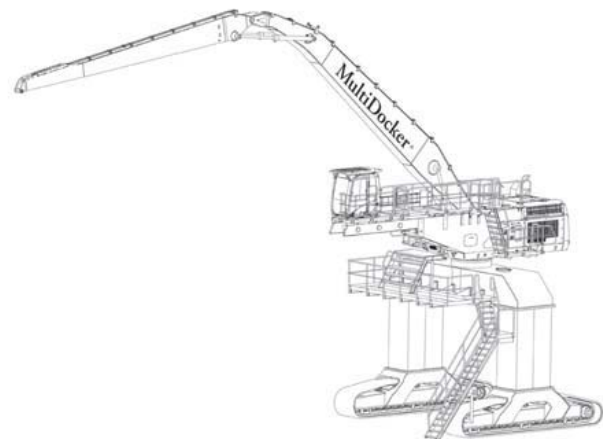
CR1500

The MultiGantry

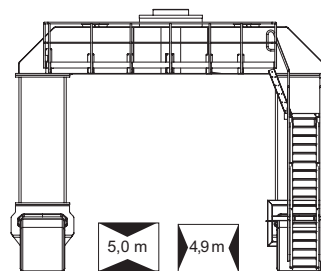
Depending on individual customer needs, the MultiDock CH74D can be supplied with several undercarriage configurations, ranging from the MG4600C to the MG7800C.

The latter of these allows for trucks and train wagons to safely pass through. This solution makes the MultiDock extremely efficient by allowing short swing cycles and the possibility to work a large area without having to constantly move the machine.

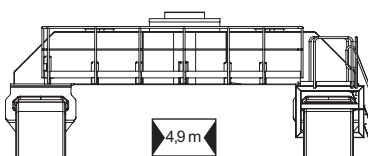
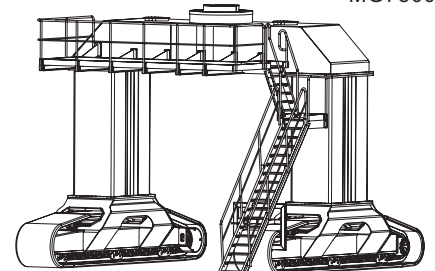
The MultiDock can also be configured with a rail track fitted gantry undercarriage option tailored to suit each customer's individual requirements. The gantry can be manufactured to fit most widths and heights of rails with the numbers and size of wheels designed to comply with the specific rail track loadings allowed at the customer's site.



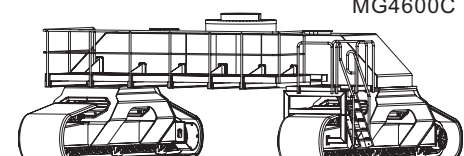
CH74D



MG7800C



MG4600C





CAT 374 D

We have access to one of the world's strongest trademarks through our partnership with Caterpillar. Our combination of CAT374D's platform and our industrially developed and manufactured components are meticulously adjusted and tested. This result in that MultiDock gets optimal dimensions with long service life, low operating costs and high performance!

Diesel Engine	CAT C15 ACERT
Displacement	15,20 liter
Tier/Stage	III
Net Power	355 kW
Fuel tank	930 liter
Travel speed	3,5 km/h
Max pump flow	2 x 440 L/min

E-Power:

Electrical Engine	VEM
Maximum RPM	1800
Net Power	315 KW
Travel speed	3,5 km/h
Max pump flow	2 x 440 L/min
Frequency Converter	

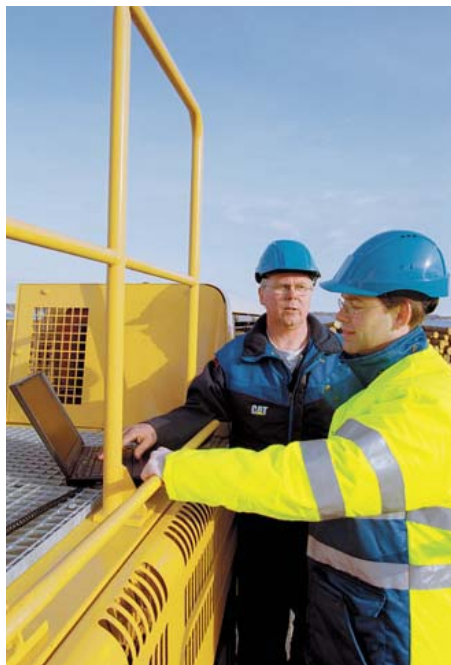
Operators comfort

A proper working environment translates to operating efficiency. MultiDock offers four standardized cabin alternatives, a unique approach to the operator's comfort. By consulting the customer, we reach agreement on the specific requirements and tailor-make the cabin. We can customize the cabin to meet the operator's request in terms of the seat, operating controls and levers. Our history in cargo handling is also reflected in the cabin's exceptional stability. The cabins stable design means that the operator is unaffected during heavy lifts and while operating at full capacity. MultiDock always aims at the best possible operator comfort.

The standardized floor window in the CM8000 gives the driver the possibility to view the working area underneath the cabin, which together with the stick-mounted camera equipment also allows for exceptional visibility. It goes without saying that all MultiDock CH74D cranes are delivered with all imaginable safety features, including hardened glass, safety railings, emergency exits and fire extinguisher. Safety is an important aspect for us!

Tools

MultiDock is one of the market's most versatile machines for fast and safe cargo handling. It can be equipped with a majority of tools, especially adjusted for different commodities. These tools can fast and easily be interchanged, which yields a flexible and efficient operation. Sawn wood goods, pulpwood, paperpulp, scrap, big-bags, steel and other bulk cargo are efficiently handled by a MultiDock. The quick release coupling facilitates the change of tools to handle the different types of goods.



Optional equipment

- Stick mounted industrial camera with in cabin colour monitor
- Rear view industrial camera system (standard)
- Radio / cd player with remote control (standard)
- High capacity interior cabin heater
- Automatic Lubrication systems (standard)
- Xenon work lights
- Additional undercarriage work-lights
- Electric Engine heater
- Electric hydraulic oil heater
- Electric cabin heater
- Diesel Pre-heater
- Cold weather starting aid
- Extra fuel tank 5200 (2 x 2600) Litre capacity options
- Scrap magnet generator
- Extra hydraulic pipe protection for arduous applications
- Quick release couplings
- Heavy duty semi-automatic Multicoupler
- On-board Fire suppression systems
- Caterpillar Product link
- Caterpillar Machine Security System (MSS) driver access
- Bio-degradeable hydraulic oil
- Customized colors

Service

The MultiDock is designed for maximum reliability of operation and minimum need of service. Well planned maintenance is, however, the safest way to sustain the cargo handler's performance and to minimize the risk for stoppage of production.

Through our close cooperation with Caterpillar's dealer and service network, can we offer a unique service concept - "5-star customer service". Anything from computer based machine-diagnosis and supply of original spare parts to a complete offer deal of service and maintenance programs, all which is available through specialists for our customers' confidence.

MultiDock Cargo Handling AB

Saltängsgatan 15
SE-602 22 Norrköping

Phone: +46 (0)11 196 200
Fax: +46 (0)11 196 239

info@multidocker.com
www.multidocker.com